



Quadrant flow

A flowable, light-curing, radiopaque hybrid composite

The convenience of 1 syringe in 1 shade

Most common application areas for flowable composite:

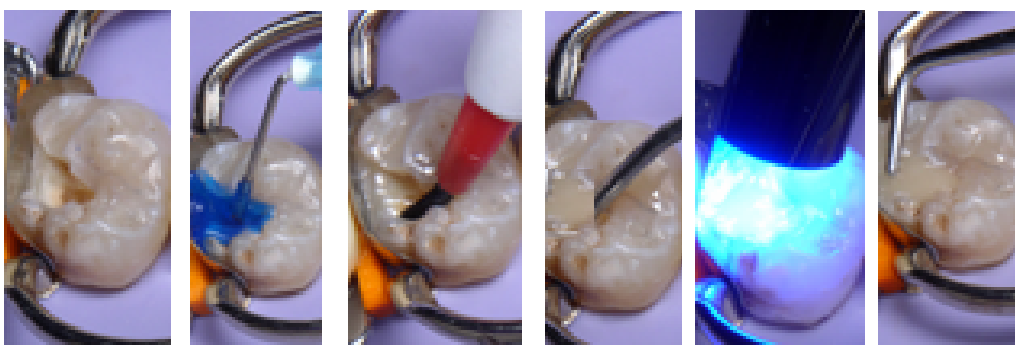
- Base/liner material
- Splits
- Repairs in posterior area (e.g. air bubbles in composite, gaps next to inlays and onlays)



→ Shade is not important here, as the composite is not visible.

Quadrant Flow is perfect for such applications:

- Excellent flowing capacities, flows beautifully into the box and into tiny gaps.
- Right consistency for forming a good ball to secure a splint.



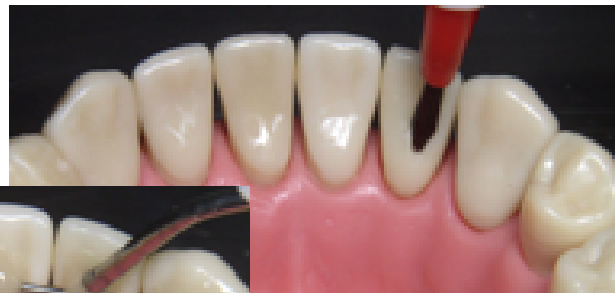
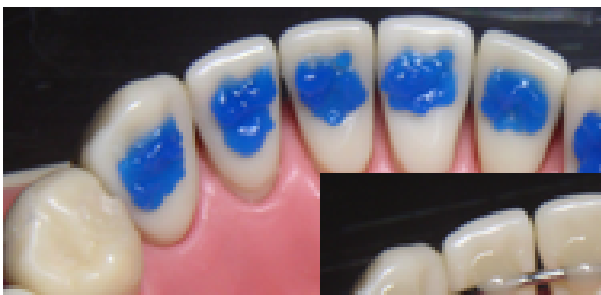


Quadrant flow

A flowable, light-curing, radiopaque hybrid composite

Advantages in use:

- Quick, easy application
- Thixotrope: manageable consistency
- Doesn't stick to instruments
- Fluoride release
- Perfectly compatible with Quadrant composites



Packaging



Syringe of 1.8g/1.0ml

+ 5 tips

Shade: A3

Shelf life: 3 years

