

QUAST – Quadrant Anterior Shine Tool



Special selected quality marten hair brushes very suitable for applying
Quadrant Anterior Shine smoothly and extremely accurate

Before You start:

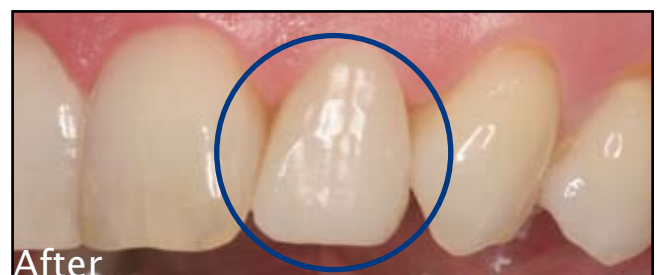


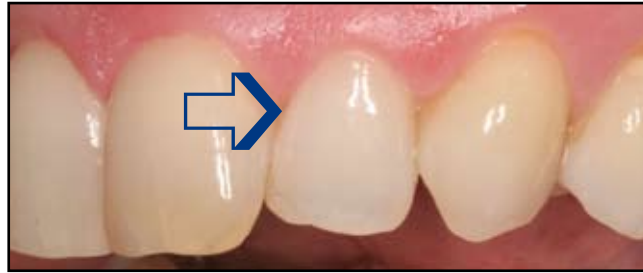
If desired, cut of the
top of the brush



If desired, you can wet
the QUAST with a
minimal quantity of
resin to enhance
flow of the composite.

Treatment plan Quast (other side)





Anterior composite facing with Quadrant Anterior Shine and the QUAST

Place the
 automatrix



1

Apply Quadrant
 Anterior Shine
 in layers
 (cervical A3)



2

Carefully adapt
 to edges.



3

Spread evenly
 with the QUAST



4

Polymerize
 the first layer



5

Apply next layer
 Quadrant
 Anterior Shine
 (A2 to incisal)



6

Spread evenly
 again with the
 QUAST



7

Polymerize
 second layer



8

Remove
 automatrix
 and polymerize
 again.



9

Carefully shape
 with a burr



10

Polish well



11

End result



12