

Protocol for an Anterior restoration



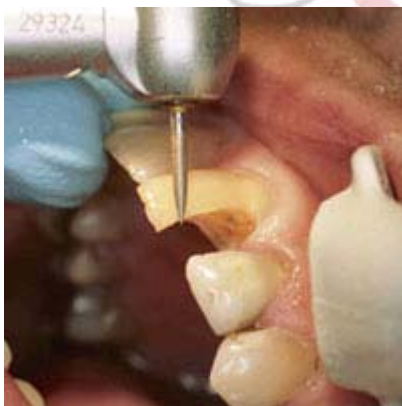
1.

Discolored restoration in 21 element.



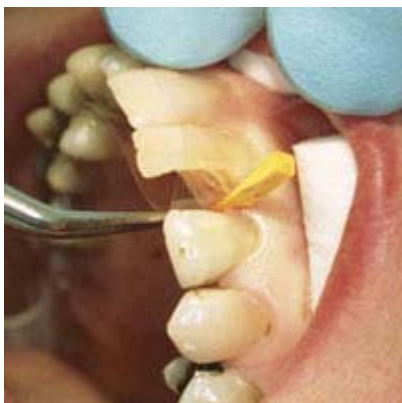
2.

Define shade with Quadrant Universal LC shade guide, made of original composite with VITA shades.



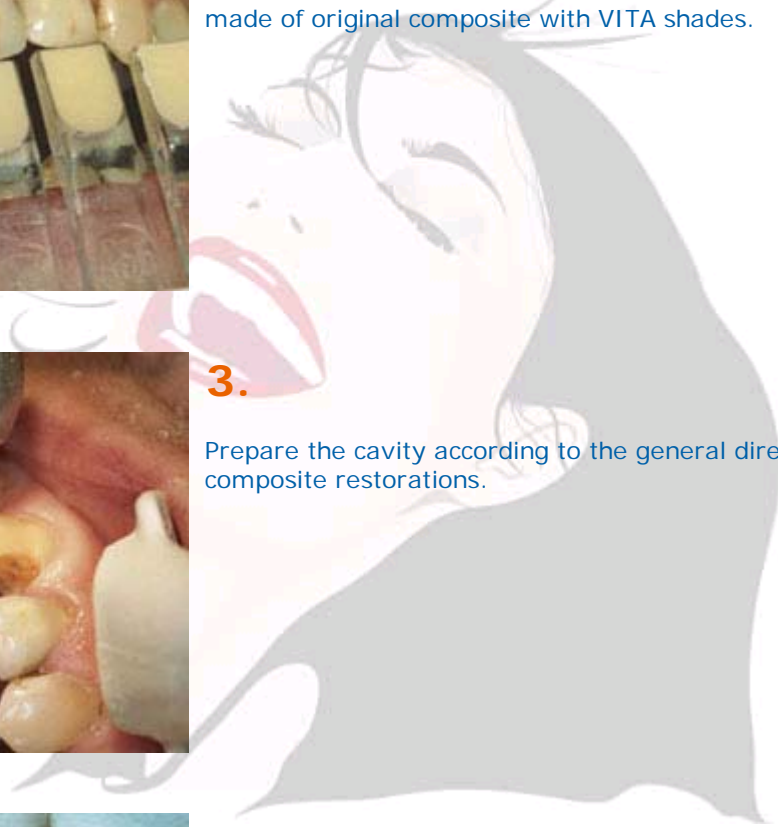
3.

Prepare the cavity according to the general directions for composite restorations.



4.

Clean and dry the preparation.
Apply wedges and matrixband.





5.

Apply Quadrant Total Etch onto enamel and dentin and leave for 15-30 seconds.
Rinse thoroughly for at least 5 seconds.
Remove excess moisture with a gentle stream of air.



6.

Apply 3 layers of Quadrant Uni-1-Bond.
Wait for 15 seconds and light cure for 20 seconds.



7.

Apply Quadrant Universal LC in layers of max. 2mm in the necessary shade(s).
Quadrant Universal LC is also available in syringes.



8.

Light cure every layer for 20 seconds (for shade OA2: 40 seconds).



9.

Finish with a fine diamond, and polish with flexible discs and silicon polishers.



10.

Result after restoration: aesthetically perfect.